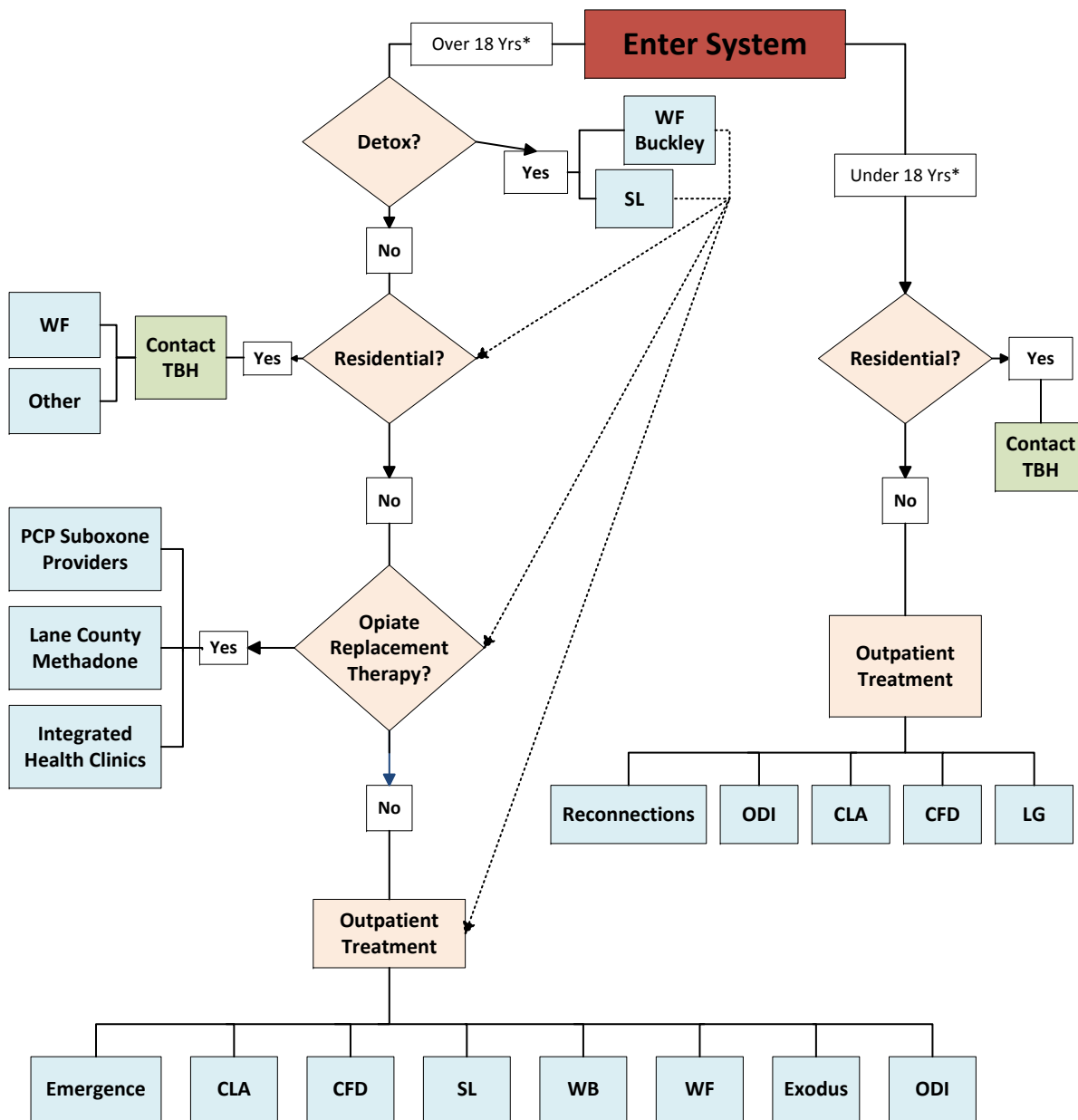


Trillium Alcohol & Drug Referral System



Trillium Behavioral Health
541-485-2155
 **For Provider Services, Press 3

24 Hour Information & Referral
 General: White Bird Referral and Crisis, 1-800-422-7558
 General: Hourglass Crisis Center, 541-858-8170
 Youth: Looking Glass Station 7, 1-888-689-3111
 Youth: Crisis Response team, 1-888-989-9990

TREATMENT AGENCIES:
 CFD: Center for Family Development, 541-342-8437
 CLA: Centro Latino Americano, 541-687-2667
 Emergence:
 Eugene, 541-687-8820
 Florence, 541-997-8509
 Exodus: Exodus Recovery Program,
 Harrisburg 541-998-5660
 Integrated Health Clinics:
 Methadone Program, 541-344-3574
 Lane County Methadone, 541-682-4464
 LG: Looking Glass, 541-484-4428
 ODI: OSLC Development INC., 541-485-2711
 Reconnections: Reconnections Counseling,
 Florence, 541-997-1697
 SL: Serenity Lane, 541-485-1577
 WB: White Bird/Chrysalis, 541-683-1641
 WF: Willamette Family, 541-762-4300
 Eugene, East Springfield, Cottage Grove
 WF Buckley: Buckley Detox Center, 541-762-4575

***Some agencies define youth as up to 21 years of age.**