

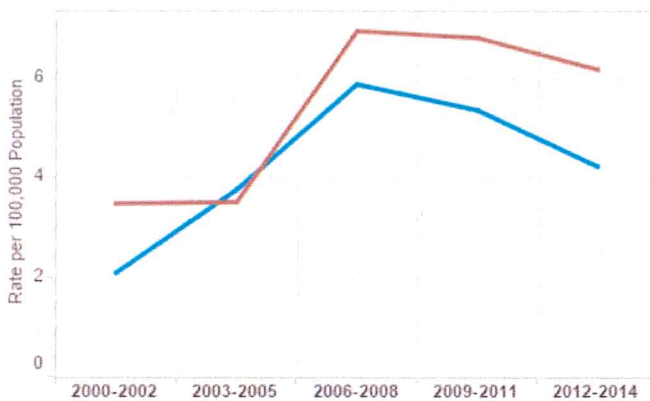
Opioid Use in Lane County

Prepared by Alcohol & Drug Program, Prevention Section, Lane County Public Health, March 2016

Pharmaceutical Opioid Deaths in Lane County

Source: Oregon Health Authority, 2000-2014

Overdose Deaths by County



Overdose Death Drug Type

County or Grant Region

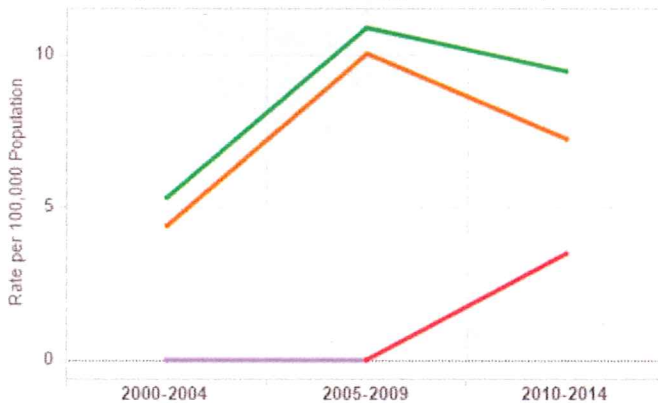
3 or 5 Year Rates

* Technical Note: Counties with smaller populations may have rates suppressed due to small numbers. 5 year rates may be more reliable.

- County
- Lane
 - Oregon Statewide

Pharmaceutical Opioid Deaths By Age in Lane/Douglas Region

Source: Oregon Health Authority, 2000-2014



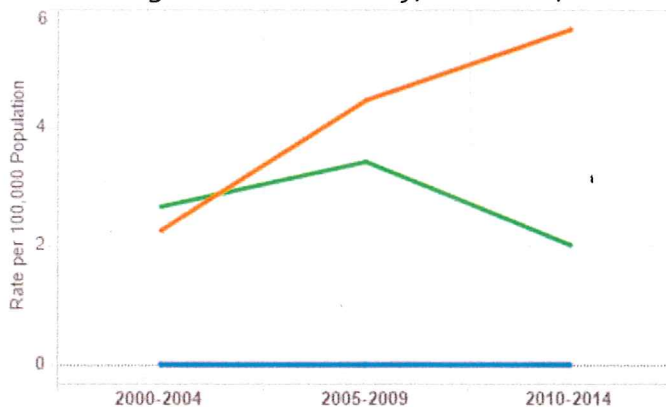
Overdose Death Drug Type

Grant Region

- Age Group (Years)
- <18
 - 18-44
 - 45-64
 - 65-74
 - 75+

Heroin Opioid Deaths By Age in Lane/Douglas Region

Source: Oregon Health Authority, 2000-2014



Overdose Death Drug Type

Grant Region

- Age Group (Years)
- <18
 - 18-44
 - 45-64
 - 65-74
 - 75+

Lane County Public Health Prevention Section

CREATING HEALTHY COMMUNITIES

HEALTH HAPPENS WHERE WE LIVE, LEARN, WORK, AND PLAY.

LANE COUNTY'S PREVENTION STAFF LOOKS AT WHAT IS HEALTHY; THEN WORKS TO PROMOTE CHANGES THAT WILL IMPROVE OUR HEALTH, BOTH MENTALLY AND PHYSICALLY.

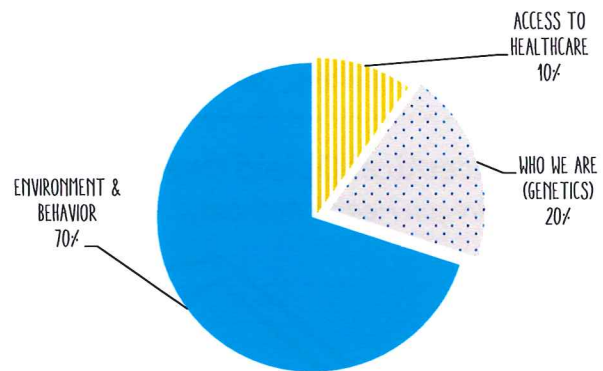
WE DEFINE PREVENTION AS THE ACTIVE PROCESS OF IMPROVING HEALTH AND WELL-BEING OF PEOPLE BY REDUCING RISK FACTORS AND PROMOTING PROTECTIVE FACTORS.

RISK & PROTECTIVE FACTORS

RISK FACTORS INCREASE THE CHANCE THAT A PERSON MIGHT DO THINGS THAT LEAD TO POOR HEALTH. THEY CAN BE COMMUNITY, FAMILY, SCHOOL OR INDIVIDUAL FACTORS. EXAMPLES INCLUDE CHILD ABUSE AND TRAUMA, POVERTY AND VIOLENCE, AND BEHAVIORS LIKE TOBACCO, DRUG AND ALCOHOL USE.

PROTECTIVE FACTORS ARE THINGS OR TRAITS IN PEOPLE, THEIR FAMILIES AND COMMUNITIES THAT INCREASE GOOD HEALTH AND WELL-BEING; THEY HELP PEOPLE DEAL WITH STRESSFUL EVENTS AND REDUCE THE IMPACT THAT RISK FACTORS MIGHT HAVE. EXAMPLES INCLUDE HAVING ACCESS TO RESOURCES AND SUPPORTS AND STRONG CONNECTIONS TO FAMILY, SCHOOL, AND COMMUNITY.

WHAT AFFECTS OUR HEALTH



SCHROEDER, S.A. (2007). WE CAN DO BETTER—IMPROVING THE HEALTH OF THE AMERICAN PEOPLE. NEW ENGLAND JOURNAL OF MEDICINE, 357, 1221-1228.

ISSUES WE WORK ON

- ALCOHOL
- DRUGS
- TOBACCO
- NUTRITION & PHYSICAL ACTIVITY
- GAMBLING
- SUICIDE
- MENTAL HEALTH
- HEALTH EQUITY

WHAT WE DO

- COLLECT AND ANALYZE DATA
- SHARE INFORMATION
- FACILITATE COMMUNITY INVOLVEMENT
- PROVIDE TECHNICAL ASSISTANCE
- ANALYZE AND DEVELOP HEALTH POLICIES
- DEVELOP COMMUNITY HEALTH IMPROVEMENT PLANS
- TRAIN AND EDUCATE

FOR MORE INFORMATION, VISIT US AT WWW.PREVENTIONLANE.ORG



PUBLIC HEALTH
Prevent. Promote. Protect

preventionlane
www.preventionlane.org



@preventionlane

